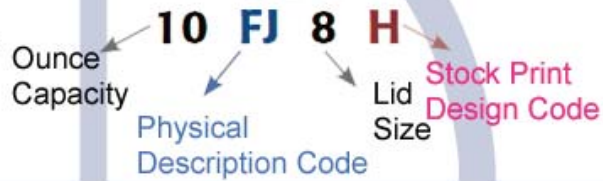


## Dart Cup and Lid Chart

### Stock Number Legend:

Numbers denote size.  
Letters denote a specific style.



### Physical Description

- J J Cup Style
- T Tall
- A Auto
- F Flush Fill
- B Bowl
- M Medium Profile
- S Squat Profile
- KY Greek Key Design
- X X Cup Style

### Stock Print Design Codes

- E Impulse
- H Horizon
- G Cafe G
- TWN Uptown
- RPM RPM
- C Coke

### DART FOAM CUPS

- Versatile, practical, and convenience of insulated foam beverage cups
- Hot or cold drinks are insulated well



SWP ITEM #	MFG ITEM #	DESCRIPTION
645.1034	4J4	4 OZ. - 1000/CTN
645.1037	6J6	6 OZ. - 1000/CTN
645.1049	8J8	8 OZ. - 1000/CTN
645.1061	10J10	10 OZ. - 1000/CTN
645.1073	12J12	12 OZ. - 1000/CTN
645.1080	12J16	12 OZ. - 1000/CTN
645.1085	16J16	16 OZ. - 1000/CTN
645.1097	20J16	20 OZ. - 500/CTN
645.4085	32TJ32	32 OZ. - 500/CTN

### DART HORIZON FOAM CUPS

- Horizon design adds a touch of color to any beverage service, while providing an economical alternative to custom print
- Suited for hot or cold beverages



SWP ITEM #	MFG ITEM #	DESCRIPTION
645.2012	8J8H	8 OZ. - 1000/CTN
645.2027	32AJ20H	32 OZ. - 400/CTN

# FOOD SERVICE DISPOSABLES - HOT CUPS & LIDS

**WEGBREIT**  
 **WRAPPED PLASTIC CUPS**

- 10 oz.
- Wrapped cups offer the best means of sanitation
- Translucent



SWP ITEM #	MFG ITEM #	DESCRIPTION
640.2212	617-005	10 OZ. - 1000/CTN

 **DART CLEAR PLASTIC CUPS**

- Cups offer clarity
- Easily recyclable
- Flexible and crack resistant



SWP ITEM #	MFG ITEM #	DESCRIPTION
642.1015	TP22	12 OZ. - 1000/CTN

 **SOLO CLEAR PLASTIC CUPS POLYPROP**

- Cups offer clarity
- Easily recyclable
- Flexible and crack resistant



SWP ITEM #	MFG ITEM #	DESCRIPTION
645.1203	16P	16 OZ. - 1000/CTN

 **DART CLEAR PLASTIC CUPS PET**

- Ultra Clear premium plastic PET cups
- Made of Crack-Resistant PET Plastic



SWP ITEM #	MFG ITEM #	DESCRIPTION
642.1024	TP9R	SQUAT 9 OZ. - 1000/CTN
642.1047	TP16D	16 OZ. - 1000/CTN

 **DART TRANSLUCENT CONEX PLASTIC CUPS**

- Economical
- The cups provide safety and convenience
- Sidewall ridges adds strength for the cup
- Rolled cup rim increases cup strength and provides a secure lid fit



SWP ITEM #	MFG ITEM #	DESCRIPTION
642.1018	3.5N25	3.5 OZ. - 2500/CTN
642.1062	5N25	5 OZ. - 2500/CTN
642.1086	9N25	9 OZ. - 2500/CTN
642.1122	14N	14 OZ. - 1000/CTN
645.1205	16K	16 OZ. - 1000/CTN

 **DART TRANSLUCENT CONEX PLASTIC CONTAINER**

- Economical
- Audible snap closure ensures secure lid seal
- Made of durable, crack-resistant polypropylene
- Rolled cup rim increases cup strength and provides a secure lid fit



SWP ITEM #	MFG ITEM #	DESCRIPTION
670.5017	200PC	2 OZ. - 2500/CTN

 **DART TRANSLUCENT CONEX PLASTIC CONTAINER LID**

- Economical
- Audible snap closure ensures secure lid seal
- Made of durable, crack-resistant polypropylene



SWP ITEM #	MFG ITEM #	DESCRIPTION
670.5018	PL2N	2500/CTN

**SOLO** SOLO  
**GRADUATED PLASTIC MEDICINE CUPS**

- Graduated cups show 1/4, 1/2, 3/4, and 1 oz. measurements



SWP ITEM #	MFG ITEM #	DESCRIPTION
646.1013	T101-0090	1 OZ. - 5000/CTN

**Dixie** DIXIE  
**PERFECT TOUCH DESIGN PAPER CUPS**

- Cups insulate better than costly double-cupping
- Cup design provides comfortable grip
- Contains no polystyrene foam
- Features a "Coffee Dreams" design



SWP ITEM #	MFG ITEM #	DESCRIPTION
655.3046	5338CD	8 OZ. - 1000/CTN
655.3015	5342CD	12 OZ. - 1000/CTN
655.3018	5356CD	16 OZ. - 1000/CTN

**SOLO** SOLO  
**SYMPHONY DESIGN COLD DRINK CUPS**

- Treated paper cups offer superior rigidity as well as flexibility
- Made with at least 50% renewable resources



SWP ITEM #	MFG ITEM #	DESCRIPTION
655.4001	R53 - 00001	5 OZ. - 3000/CTN
655.3036	R7N J8000	7 OZ. - 2000/CTN
655.3038	R12N J8000	12 OZ. - 2000/CTN
655.3039	RW16 J8000	16 OZ. - 1000/CTN

**NetChoice** NETCHOICE  
**SYMPHONY DESIGN CUP AND LID COMBO**

- Cup and lid combo



SWP ITEM #	MFG ITEM #	DESCRIPTION
655.3011	00037	16 OZ. - 250/CTN

**SOLO** SOLO  
**SYMPHONY DESIGN PAPER CUPS WITH HANDLES**

- Design includes handle



SWP ITEM #	MFG ITEM #	DESCRIPTION
655.3054	376HSM-J8000	6 OZ. - 1000/CTN
655.3052	378HSM-J8000	8 OZ. - 1000/CTN

**SOLO** SOLO  
**BISTRO DESIGN PAPER CUPS**

- Cups are designed for coffee, hot tea or cocoa



SWP ITEM #	MFG ITEM #	DESCRIPTION
640.2050	316SI-0041	16 OZ. - 1000/CTN
640.2053	420SI-0041	20 OZ. - 600/CTN

**SOLO** SOLO  
**TROPHY MISTIQUE DESIGN FOAM CUPS**

- Cups are designed for coffee, hot tea or cocoa



SWP ITEM #	MFG ITEM #	DESCRIPTION
640.2047	X12 0029	12 OZ. - 1000/CTN

**SOLO** SOLO  
**JAZZ DESIGN POLY COATED PAPER CUPS**

- Cups are designed for coffee, hot tea or cocoa



SWP ITEM #	MFG ITEM #	DESCRIPTION
640.2006	370JZ 00055	10 OZ. - 1000/CTN

# FOOD SERVICE DISPOSABLES - COLD CUPS & LIDS

## SOLO SOLO PAPER CUP WHITE

- Economical
- 3 oz.



SWP ITEM #	MFG ITEM #	DESCRIPTION
645.2046	RD3L - 2050	3 OZ. 2400/CTN

## SOLO SOLO ROLLED RIM WATER CONE CUP

- Helps to keep areas sanitary around the water cooler
- Made with at least 80-90% renewable resources



SWP ITEM #	MFG ITEM #	DESCRIPTION
655.3057	4BR-2050	4 OZ. - 5000/CTN

## SOLO SOLO PAPER PLEATED WATER CUP

- Pleated water cup
- 3.5 oz.
- Flat bottom



SWP ITEM #	MFG ITEM #	DESCRIPTION
640.2073	450 2050	3.5 OZ. - 5000/CTN

## DART DART SQUAT FOAM CONTAINERS

- Insulated foam helps keep food at its proper serving temperature
- Foam food containers can be prepackaged or used for immediate serving



SWP ITEM #	MFG ITEM #	DESCRIPTION
645.4008	3.5J6	3.5 OZ. - 1000/CTN
645.4001	4J6	4 OZ. - 1000/CTN
645.4020	8SJ32	8 OZ. - 500/CTN
645.4025	8SJ20	8 OZ. - 1000/CTN

## SOLO SOLO PAPER SOUFFLE CUP

- Economical portion cups



SWP ITEM #	MFG ITEM #	DESCRIPTION
655.3067	075-2050	0.75 OZ. - 5000/CTN
655.3069	100-2050	1 OZ. - 5000/CTN
655.3070	200-2050	2 OZ. - 5000/CTN

## DART DART PLASTIC CUP LIDS

- White Vented Lid
- 1000/CTN



SWP ITEM #	MFG ITEM #	DESCRIPTION
655.1241	6JL	WHITE, VENTED
FITS CUPS: 6J6, 6X6, 3.5J6, 4J6		
655.1305	12JL	WHITE, VENTED
FITS CUPS: 10J12, 12J12, 14J12, 14FJ12, 12X12, 6SJ12, 8SJ12, AND 6B12		

## DART DART TRANSLUCENT CUP LIDS

- White Translucent Lid
- 20JL: 1000/CTN



SWP ITEM #	MFG ITEM #	DESCRIPTION
655.1325	20JL	TRANSLUCENT, VENTED
FITS CUPS: 32AJ20, 8SJ20, 12SJ20, 16MJ20, 5B20, 6B20, 8B20, AND 10B20		

# COLD CUPS, LIDS, AND FILTERS - FOOD SERVICE DISPOSABLES



## DART LIFT N' LOCK CUP LIDS

- Insulating foam to SipThru
- Lift and lock
- 1000/CTN



SWP ITEM #	MFG ITEM #	DESCRIPTION
655.1350	8FTL	1000/CTN
FITS CUPS: 6J8, 8J8, 8KY8, 10FJ8, 8X8, 89U8, AND 89U8ESC		



## DART BLACK CAPPUCCINO CUP LIDS

- High domed, insulating foam to SipThru
- 1000/CTN



SWP ITEM #	MFG ITEM #	DESCRIPTION
655.1312	16ELBLK	1000/CTN
FITS CUPS: 112J16, 14J16, 16J16, 20J16, 24J16, 12X16, 14X16, 16X16, 20X16, 24X16, 12U16, 16U16, 20U16, AND 24U16		



## DART TRANSLUCENT LIFT N' LOCK WITH STRAW SLOT CUP LIDS

- Translucent with straw slot, insulating foam to SipThru
- Lift and lock
- 1000/CTN



SWP ITEM #	MFG ITEM #	DESCRIPTION
655.1302	12FTLS	1000/CTN
FITS CUPS: 10J12, 12J12, 14J12, 14FJ12, 12X12		
655.1310	16FTLS	1000/CTN
FITS CUPS: 12J16, 14J16, 16J16, 20J16, 24J16, 12X16, 14X16, 16X16, 20X16, 24X16, 12U16, 16U16, 20U16, AND 24U16		



## PAPERCRAFT OKLAHOMA COFFEE FILTERS 12 CUP

- 9 3/4 in. x 4 1/2 in.



SWP ITEM #	MFG ITEM #	DESCRIPTION
501.2000	11406000	1000/CTN



## PAPERCRAFT OKLAHOMA RED UNWRAPPED JUMBO STRAWS

- Red straw comes unwrapped in carton
- 10.25 in. long



SWP ITEM #	MFG ITEM #	DESCRIPTION
656.1069	68174552	2000/CTN



## DART TRANSLUCENT STRAW SLOTTED LIDS

- Translucent straw slotted
- Dart lids are the perfect answer for topping off each sale



SWP ITEM #	MFG ITEM #	DESCRIPTION
655.1253	8SL	6-10 OZ. - 1000/CTN
FITS CUPS: 8J8, 9J8, 89U8, AND 89U8ESC		

SWP ITEM #	MFG ITEM #	DESCRIPTION
655.1313	16SL	12 - 20 OZ. - 1000/CTN
FITS CUPS: 12J16, 14J16, 16J16, 20J16, 24J16, 12U16, 16U16, 20U16, AND 24U16		

SWP ITEM #	MFG ITEM #	DESCRIPTION
655.1320	20SL	32 OZ. - 1000/CTN
FITS CUPS: 32AJ20		

SWP ITEM #	MFG ITEM #	DESCRIPTION
655.1342	32SL	32 - 44 OZ. - 500/CTN
FITS CUPS: 32TJ32, 44AJ32, 44TJ32, AND 32X32		



## SOLO BLACK UNWRAPPED JUMBO STRAWS

- Black straw comes unwrapped in carton



SWP ITEM #	MFG ITEM #	DESCRIPTION
656.1078	68170171	5-3/4 IN. - 250/BOX - 12500/CTN

# FOOD SERVICE DISPOSABLES - STRAWS AND CONTAINERS

**NETCHOICE**  
 **SLIM RED STRAWS / STIRRERS**

- Red straw comes unwrapped
- 8 in. long



SWP ITEM #	MFG ITEM #	DESCRIPTION
804.1067	420248	500/BOX - 5000/CTN

**NETCHOICE**  
 **WHITE/RED WRAPPED STRIPED STRAWS**

- White striped straw comes individually wrapped
- 7.75 in. long




SWP ITEM #	MFG ITEM #	DESCRIPTION
804.1070	420292	500/BOX - 12000/CTN

**NETCHOICE**  
 **WHITE/RED JUMBO WRAPPED STRIPED STRAWS**

- White striped straw comes individually wrapped
- 10.25 in. long



SWP ITEM #	MFG ITEM #	DESCRIPTION
804.1076	420310	500/BOX - 2000/CTN

**NETCHOICE**  
 **CLEAR UNWRAPPED JUMBO STRAWS**

- Clear straw comes unwrapped in carton
- 7.75 in. long



SWP ITEM #	MFG ITEM #	DESCRIPTION
804.1075	420234	250/BOX - 12500/CTN

**NETCHOICE**  
 **BLACK UNWRAPPED JUMBO STRAWS**

- Black straw comes unwrapped in carton



SWP ITEM #	MFG ITEM #	DESCRIPTION
804.1077	420222	7-3/4 IN. - 2500/CTN
804.1088	420136	6 IN. - 1000/BOX 10000/CTN

**NETCHOICE**  
 **RED AND WHITE SIPPER/STIRRERS**

- Comes unwrapped
- 8 in. long



SWP ITEM #	MFG ITEM #	DESCRIPTION
804.1089	420158	1000/BOX - 10000/CTN

**SOLO**  
 **WHITE UNCOATED PAPER CONTAINERS**

- Container can be used for either hot or cold foods



SWP ITEM #	MFG ITEM #	DESCRIPTION
645.1026	U508N 02050	8 OZ. - 1000/CTN

**SOLO**  
 **WHITE POLY COATED PAPER CONTAINERS**

- Perfect for just about any occasion and can be used for either hot or cold foods



SWP ITEM #	MFG ITEM #	DESCRIPTION
645.2040	VS508-2050	8 OZ. - 1000/CTN
645.2042	VS616-2050	16 OZ. - 500/CTN

# CONTAINERS AND PLATES - FOOD SERVICE DISPOSABLES

## SOLO SOLO WHITE PLASTIC LID TRANSLUCENT

- Fits NW and MN - non x



SWP ITEM #	MFG ITEM #	DESCRIPTION
655.3005	NL8RT-7000	8 OZ. - 500/CTN

## SOLO SOLO TRANSLUCENT PLASTIC MICRO DELI CONTAINERS

- Allows prepackaged foods to be refrigerated and microwave-heated in the same container



SWP ITEM #	MFG ITEM #	DESCRIPTION
655.3002	MN8-0100	8 OZ. - 500/CTN
655.3013	MN12-0100	12 OZ. - 500/CTN
655.3014	MN16-0100	16 OZ. - 500/CTN
655.3016	MN32-0100	32 OZ. - 500/CTN

## SOLO SOLO WHITE UNCOATED PAPER TUBS

- Great option for dry snack items



SWP ITEM #	MFG ITEM #	DESCRIPTION
647.6026	5TI N0195	83 OZ. - 100/CTN
647.6050	10TI N0198	165 OZ. - 100/CTN

## HUHTAMAKI HUHTAMAKI WHITE CHINET PAPER PLATES

- 6 in. white paper plate - *Vacate* plate



SWP ITEM #	MFG ITEM #	DESCRIPTION
670.3003	VACATE	1000/CTN

- 10.25 in. white paper plate 3 compartment - *Vestry* plate



SWP ITEM #	MFG ITEM #	DESCRIPTION
670.3013	VESTRY	500/CTN

- 10.5 in. white paper plate - *Venture* plate



SWP ITEM #	MFG ITEM #	DESCRIPTION
670.3025	VENTURE	500/CTN

## DART DART UNCOATED WHITE PAPER PLATE

- 9 in. uncoated paper plate



SWP ITEM #	MFG ITEM #	DESCRIPTION
670.3018	15303012	1000/CTN

# FOOD SERVICE DISPOSABLES - PLATES AND BOWLS



## DART LAMINATED FOAM PLATE

- Quality foam dinnerware for any food service application
- Dinnerware is lighter than conventional china, yet strong enough to hold a full portion of food without bending



SWP ITEM #	MFG ITEM #	DESCRIPTION
670.5121	9PWQ	WHITE - 500/CTN



## DART INSULATED FOAM BOWL

- Insulated foam bowls keep hot servings hot and cold servings cold
- Designed with a rounded spoonable bottom



SWP ITEM #	MFG ITEM #	DESCRIPTION
670.3049	8B20	8OZ - 1000/CTN
670.3061	12B32	12OZ - 1000/CTN



## SOLO CHAMPAGNE FOAM LAMINATED TABLEWARE

- 9 in. and 10 in. plate



SWP ITEM #	MFG ITEM #	DESCRIPTION
655.1016	RS105Y/0019	500/CTN - 10 IN.

- Platter



655.7007	RSF79-0019	500/CTN - 7 IN. X 9 IN.
----------	------------	-------------------------



## DART CONCORDE NON-LAMINATED FOAM PLATE

- Quality foam dinnerware for any food service application
- Dinnerware is lighter than conventional china, yet strong enough to hold a full portion of food without bending



SWP ITEM #	MFG ITEM #	DESCRIPTION
670.5061	6PWCR	6" - 1000/CTN
670.5073	9PWCR	9" - 500/CTN
670.5079	10PWC	10-1/4" - 500/CTN
670.5097	10CPWC	10-1/4" - 3 COMP - 500/CTN



## DART HONEY QUIET CLASSIC LAMINATED

- Perfect for serving both hot and cold foods
- Laminated for extra strength and gloss



SWP ITEM #	MFG ITEM #	DESCRIPTION
655.7012	12BWHQR	BOWL - 1000/CTN - 12 OZ.



## DART QUIET CLASSIC LAMINATED PLATTER

- Perfect for serving both hot and cold foods
- Laminated for extra strength and gloss



SWP ITEM #	MFG ITEM #	DESCRIPTION
670.5074	9PRWQ	WHITE - 500/CTN - 9 IN.



# PLATES AND BOWLS - FOOD SERVICE DISPOSABLES



## DART NON-LAMINATED FOAM BOWL CONCORDE

- Foam dinnerware any food service application
- Dinnerware is lighter than conventional china, yet strong enough to hold a full portion of food without bending



SWP ITEM #	MFG ITEM #	DESCRIPTION
670.5109	12BWWC	12OZ - 1000/CTN



## DART HONEY QUIET CLASSIC LAMINATED BOWL

- Perfect for serving both hot and cold foods
- Laminated for extra strength and gloss



SWP ITEM #	MFG ITEM #	DESCRIPTION
670.5111	3.5BWHQ	3.5OZ - 1000/CTN



## PACTIV BLACK PLATTER PLACESSETTER PREMIER

- 10 in. x 12.5 in.



SWP ITEM #	MFG ITEM #	DESCRIPTION
672.1070	16202675	600/CTN



## DIXIE RED PLAID POLY COATED PAPER TRAY

- Poly coated
- Red plaid



SWP ITEM #	MFG ITEM #	DESCRIPTION
677.6001	RP50	1000/CTN - 1/2 LB
677.6013	RP1008	1000/CTN - 1 LB
677.6025	RP2008	1000/CTN - 2 LB
677.6037	RP3008	500/CTN - 3 LB
677.6049	RP500	500/CTN - 5 LB



## DART FLUTED HOTDOG TRAYS WHITE 8 IN.

- Hotdog tray
- 8 in.



SWP ITEM #	MFG ITEM #	DESCRIPTION
677.6077	23222328	3000/CTN

# FOOD SERVICE DISPOSABLES - FILM AND CUTLERY



## ELKAY POLY FREEZER FILM

- 1 mil thickness



SWP ITEM #	MFG ITEM #	DESCRIPTION
531.4038	15"X4500'	1 RL - 15 IN X 4500 FT
531.4050	18"X4500'	1 RL - 18 IN X 4500 FT
531.4062	24"X4500'	1 RL - 24 IN X 4500 FT



## NETCHOICE HEAVY CUTLERY COMBO

- Fork, knife, spoon, napkin, salt, and pepper
- The smart choice for casual dining meals
- Strong, shatter resistant and durable
- Convenient and sanitary

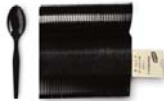


SWP ITEM #	MFG ITEM #	DESCRIPTION
804.1080	414034	250/CTN



## DIXIE SMART STOCK BLACK PLASTIC REFILL

- **Spoon**
- Fast and easy to restock dispenser
- Pick up a new cutlery refill, slide it into the dispenser, rip and pull away the binding tape, close the door and you're done
- Fits special order dispenser



SWP ITEM #	MFG ITEM #	DESCRIPTION
802.2003	SSS51	960/CTN

- **Fork**
- Fast and easy to restock dispenser
- Pick up a new cutlery refill, slide it into the dispenser, rip and pull away the binding tape, close the door and you're done
- Fits special order dispenser



SWP ITEM #	MFG ITEM #	DESCRIPTION
802.2001	SSF51	960/CTN

- **Knife**
- Fast and easy to restock dispenser
- Pick up a new cutlery refill, slide it into the dispenser, rip and pull away the binding tape, close the door and you're done
- Fits special order dispenser



SWP ITEM #	MFG ITEM #	DESCRIPTION
802.2002	SSK51	960/CTN



## NETCHOICE MEDIUM WHITE PLASTIC STYRENE

- **Spoon**
- Plastic utensils are ideal for office parties, luncheons and breakroom use
- Plastic utensils are medium-weight for flexibility as well as shatter resistant and durable



SWP ITEM #	MFG ITEM #	DESCRIPTION
804.1058	406072	1000/CTN

- **Fork**
- Plastic utensils are ideal for office parties, luncheons and breakroom use
- Plastic utensils are medium-weight for flexibility as well as shatter resistant and durable



SWP ITEM #	MFG ITEM #	DESCRIPTION
804.1062	406190	1000/CTN

- **Knife**
- Plastic utensils are ideal for office parties, luncheons and breakroom use
- Plastic utensils are medium-weight for flexibility as well as shatter resistant and durable



SWP ITEM #	MFG ITEM #	DESCRIPTION
804.1040	406194	1000/CTN



## NETCHOICE MEDIUM WHITE POLYPROPYLENE

- **Spoon**
- Great for everyday use
- White color
- Medium weight



SWP ITEM #	MFG ITEM #	DESCRIPTION
804.7029	406014	1000/CTN

- **Fork**
- Great for everyday use
- White color
- Medium weight



SWP ITEM #	MFG ITEM #	DESCRIPTION
804.7030	406010	1000/CTN

- **Knife**
- Great for everyday use
- White color
- Medium weight



SWP ITEM #	MFG ITEM #	DESCRIPTION
804.7028	406017	1000/CTN

**NETCHOICE**  
**HEAVY BEIGE**  
**PLASTIC STYRENE**

- **Spoon**
- Plastic utensils are heavy-weight for flexibility as well as shatter resistant and durable



SWP ITEM #	MFG ITEM #	DESCRIPTION
804.2040	406106	1000/CTN

- **Fork**
- Plastic utensils are heavy-weight for flexibility as well as shatter resistant and durable



804.2045	406102	1000/CTN
----------	--------	----------

- **Knife**
- Plastic utensils are heavy-weight for flexibility as well as shatter resistant and durable



804.2050	406110	1000/CTN
----------	--------	----------

**NETCHOICE**  
**EXTRA HEAVY BEIGE**  
**PLASTIC STYRENE**

- **Spoon**
- Plastic utensils are extra heavy-weight for flexibility as well as shatter resistant and durable



SWP ITEM #	MFG ITEM #	DESCRIPTION
804.3040	406415	1000/CTN

- **Fork**
- Plastic utensils are extra heavy-weight for flexibility as well as shatter resistant and durable



804.3045	406411	1000/CTN
----------	--------	----------

- **Knife**
- Plastic utensils are extra heavy-weight for flexibility as well as shatter resistant and durable



804.3050	406419	1000/CTN
----------	--------	----------

**NETCHOICE**  
**HEAVY BLACK FORK**  
**PLASTIC STYRENE**

- Plastic utensils are ideal for office parties, luncheons and breakroom use
- Plastic utensils are medium-weight for flexibility as well as shatter resistant and durable



SWP ITEM #	MFG ITEM #	DESCRIPTION
804.2052	406101	1000/CTN

**NETCHOICE**  
**MEDIUM WHITE SPORK**  
**POLYPROPYLENE**

- Spork
- Great for everyday use
- White color
- Medium weight



SWP ITEM #	MFG ITEM #	DESCRIPTION
804.2058	406013	1000/CTN

**NETCHOICE**  
**MEDIUM WHITE SODA SPOON**  
**PLASTIC STYRENE**

- Easier to scoop ice cream and slushy drinks
- 7 7/8 in.



SWP ITEM #	MFG ITEM #	DESCRIPTION
804.1042	406359	1000/CTN

**PACTIV**  
**3 COMPARTMENT FOAM**  
**HINGED CONTAINER**

- Durable for multi-food applications
- Meets the challenge of heavier foods
- Insulated to keep hot foods hot and cold foods cold
- Easy to close and reopen



SWP ITEM #	MFG ITEM #	DESCRIPTION
672.1065	16202053	8 IN X 8 IN X 3IN - 150/CTN

# FOOD SERVICE DISPOSABLES - CONTAINERS AND FILM



## DART 1 COMPARTMENT PLASTIC HINGED CONTAINER

- Seven-lock closure means a secure seal while the elevated platform design allows stacking of multiple containers



SWP ITEM #	MFG ITEM #	DESCRIPTION
670.5145	C95PST1	8.9 X 9.4 X 3 - 200/CTN



## DART 1 COMPARTMENT PLASTIC HINGED CONTAINER

- Seven-lock closure means a secure seal while the elevated platform design allows stacking of multiple containers
- 6 in. sandwich container



SWP ITEM #	MFG ITEM #	DESCRIPTION
670.5129	C57PST1	6 X 5.8 X 3 - 500/CTN



## DART 1 COMPARTMENT FOAM HINGED LID CONTAINER

- Foam containers retain the high insulating features
- Can be used for both hot or cold foods



SWP ITEM #	MFG ITEM #	DESCRIPTION
670.5013	60HT1	5.9 X 6 X 3 - 500/CTN
670.5037	95HT1R	9.5 X 9.5 X 3 - 200/CTN



## PACTIV 3 COMPARTMENT FOAM HINGED CONTAINER

- Durable for multi-food applications
- Meets the challenge of heavier foods
- Insulated to keep hot foods hot and cold foods cold
- Easy to close and reopen



SWP ITEM #	MFG ITEM #	DESCRIPTION
670.5025	85HT3R	8.4 X 7.9 X 3.3 - 200/CTN
670.5049	95HT3R	9.5 X 9.5 X 3 - 200/CTN



## PITT PLASTICS CLEAR POLY PRINTED ICE BAGS

- Labeled ice bag
- Holds approximately 10 lbs.



SWP ITEM #	MFG ITEM #	DESCRIPTION
604.1013	IB-10	12 X 21 - 1.5 MIL - 1000/CTN



## SHIELD POLY FRESH MEAT FILM PERFORATED

- A stretch film used with automatic or manual wrapping for packaging fresh meat
- This film with its high gloss and easy stretch provides attractive packages for maximum appeal
- 65 Gage



SWP ITEM #	MFG ITEM #	DESCRIPTION
543.6037	MC-7	12 IN X 12 IN - 1100SHEETS/RL
543.6061	MC-7	18 IN X 18 IN - 700SHEETS/RL



## SHIELD POLY FRESH MEAT FILM SHRINK PVC PERFORATED

- A stretch film used with automatic or manual wrapping for fresh meat
- This film with its high gloss and easy stretch provides attractive packages for maximum appeal
- 100 Gage

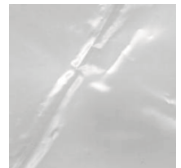


SWP ITEM #	MFG ITEM #	DESCRIPTION
546.6049	HS-10	15 IN X 15 IN - 500SHEETS/RL
546.6061	HS-10	18 IN X 18 IN - 400SHEETS/RL
546.6073	HS-10	22 IN X 22 IN - 400SHEETS/RL



## REYNOLDS FOOD SERVICE FILM CLEAR

- Food service film
- Clear
- Available in 18 in. x 2000ft and 24 in. x 2000ft



SWP ITEM #	MFG ITEM #	DESCRIPTION
547.6047	914	18 IN. X 2000FT
547.6054	916	24 IN. X 2000FT

# BOXES, FOIL, AND PAPER - FOOD SERVICE DISPOSABLES

## Papercraft Oklahoma PAPERCRAFT OKLAHOMA FOOD SERVICE FILM CUTTER BOX

- Ideal for storage and wrapping
- 12 in X 2000 ft.



SWP ITEM #	MFG ITEM #	DESCRIPTION
547.1002	73000010	12 IN. X 2000FT

## PACTIV FOIL WRAP - POP UP SHEETS

- Ideal for storage and wrapping
- For reconstitution and all purpose cooking
- Good for freezing and heavy duty lining
- 12 in X 10.75 in



SWP ITEM #	MFG ITEM #	DESCRIPTION
672.1021	W70	12BOX/CTN 200SHEETS/BOX

## Reynolds REYNOLDS FOIL WRAP SHEETS

- Ideal for storage and wrapping
- 9 in X 10.75 in sheets



SWP ITEM #	MFG ITEM #	DESCRIPTION
531.3031	711	6BOX/CTN 500SHEETS/BOX

## PACTIV FOIL TRAY 3-COMPARTMENT WITH LID

- Foil container with 3 compartments with a lid



SWP ITEM #	MFG ITEM #	DESCRIPTION
673.1082	Y7139TP	200/CTN

## PACTIV FOIL WRAP SHEETS

- Ideal for storage and wrapping
- 9 in X 10.75 in sheets



SWP ITEM #	MFG ITEM #	DESCRIPTION
532.4050	17306270	24IN. X 1000FT. - 1RL EA.

## Shamrock Paper SHAMROCK PAPER SUN BRIGHT BUTCHER PAPER

- 40 lb



SWP ITEM #	MFG ITEM #	DESCRIPTION
507.1002	151300	1 ROLL EA - 15 IN X 1300 FT
507.1012	181300	1 ROLL EA - 18 IN X 1300 FT
507.1022	241300	1 ROLL EA - 24 IN X 1300 FT
507.1028	361300	1 ROLL EA - 36 IN X 1300 FT
507.1030	481300	1 ROLL EA - 48 IN X 1300 FT

## PACTIV FOIL WRAP

- Ideal for storage and wrapping
- For reconstitution and all purpose cooking
- Good for freezing and heavy duty lining



SWP ITEM #	MFG ITEM #	DESCRIPTION
532.4041	31041803	1 RL - 18 IN X 500 FT - STD WT
532.4049	31045180	1 RL - 18 IN X 500 FT - HD WT

## AMERICAN PACKAGING MEAT TOTE TRAYS

- 25.25 in. x 14.25 in. x 5 in.
- 44 ECT



SWP ITEM #	MFG ITEM #	DESCRIPTION
682.1001	MT-TOTE	250/BUNDLE

# FOOD SERVICE DISPOSABLES - PAPER, LINERS. AND BAGS



## ELKAY STOCK PRINT HANDLE BAG

- Take Out Bags are made from strong and economical High Density material that won't rip or tear and offer a high degree of leak protection
- Easy to load and unload
- Integrated handles for easy carrying



SWP ITEM #	MFG ITEM #	DESCRIPTION
610.2011	TO121016	12"X10"X16"+ 10"BG -500/CTN



## ELKAY SIDE SEAL SADDLE PACK DELI PACK

- Easy to use slide seal closure helps keep their food fresh and secure
- Printed with "Fresh To Go" in one color



SWP ITEM #	MFG ITEM #	DESCRIPTION
610.2008	FSL108P	10" X 8" - 1000/CTN



## ELKAY BAKERY BAG STOCK PRINT

- Hi-D .001 MIC printed poly bag
- Convenient choice for bakeries, delis, supermarkets, and anywhere else breads and pastries are sold
- Complies with FDA and USDA regulations for food contact



SWP ITEM #	MFG ITEM #	DESCRIPTION
610.2010	BK6412HI-DP	6" X 4" X 12" - 1000/CTN



## DIXIE FREEZER PAPER

- "Super" keeps food fresh up to 1 year
- "Kold" and "Fresh" keeps food fresh up to 6 months



SWP ITEM #	MFG ITEM #	DESCRIPTION
528.4160	SUPLOX15	1 RL - 15 IN X 1000FT SUPER
528.4170	SUPLOX18	1 RL - 18 IN X 1000FT SUPER
528.4182	KL18	1 RL - 18 IN X 1100FT KOLD
528.4190	FG15	1 RL - 15 IN X 1100FT FRESH
528.4195	FG18	1 RL - 18 IN X 1100FT FRESH
528.4198	FG24	1 RL - 24 IN X 1100FT FRESH



## DIXIE LIFT OFF PAN LINER QUILON

- 16.375 in. x 24.375 in.



SWP ITEM #	MFG ITEM #	DESCRIPTION
534.5098	LO10	4CTN/LAYER 1000/CTN



## DIXIE CLEAR POLY WRAP SATIN PAC

- High-density film wrap ideal for freezer use
- Prevents moisture barrier between food items
- High-density polyethylene interfolded all purpose deli sheets



SWP ITEM #	MFG ITEM #	DESCRIPTION
533.5050	S-6	10000/CTN - 6 IN X 10.75 IN
533.5052	S-8	10000/CTN - 8 IN X 10.75 IN
533.5056	S-12	10000/CTN - 12 IN X 10.75 IN

# BAGS, WAX PAPER, AND LINERS - FOOD SERVICE DISPOSABLES

## DIXIE KABNET WAX PAPER

- 12 BOX/CTN - 500SHEETS/BOX



SWP ITEM #	MFG ITEM #	DESCRIPTION
532.5001	81JUNIOR	500/BOX - 8 IN X 10.75 IN
532.5013	83MASTER	500/CTN - 12 IN X 10.75 IN

## DIXIE STEAK PAPER

- High quality wet strength paper used for tempting display and merchandising, for interleaving of fresh meat and seafood in meat display cases



SWP ITEM #	MFG ITEM #	DESCRIPTION
513.2025	16406011	PEACH - 10" X 14" - 1000/CTN

## DIXIE PATTY PAPER

- Good for use with frozen meat patties - permits fast, easy separation of patties
- Controls shrinkage and prevents juice absorption



SWP ITEM #	MFG ITEM #	DESCRIPTION
535.5038	WR5659	4-1/2 X 4-1/2-W5659-13986/CTN
535.5049	15005036	5-3/16 X 5-3/16-W46-28000/CTN



## FISCHER PAPER DRY WAX SANDWICH BAG

- 6 in. x 0.75 in. x 6.5 in.
- Bulk pack



SWP ITEM #	MFG ITEM #	DESCRIPTION
604.1391	508-105	2000/CTN

## DIXIE SANDWICH WRAP QUIK WRAP GREASE RESISTANT

- Oil and grease resistant sheet offers economical protection for greasy foods
- 12 in. x 12 in.



SWP ITEM #	MFG ITEM #	DESCRIPTION
532.5073	891258	1000/CTN

## DIXIE SANDWICH WRAP QUIK WRAP GREASE RESISTANT

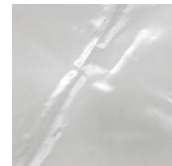
- Oil and grease resistant sheet offers economical protection for greasy foods
- 12 in. x 12 in.



SWP ITEM #	MFG ITEM #	DESCRIPTION
532.5074	16407700	5000/CTN

## Bagcraft Papercon BAGCRAFT PAPERCON CLEAR POLY WRAP DELI SHEETS

- 10 in. x 10 3/4 in.
- Clear Poly
- Deli Sheets



SWP ITEM #	MFG ITEM #	DESCRIPTION
533.5054	16400015	1000/BOX - 10,000/CTN

## Royal TCD WHITE PLASTIC TABLECOVER

- 40 in. x 300 ft.



SWP ITEM #	MFG ITEM #	DESCRIPTION
753.1063	013180	6BOX/CTN

# FOOD SERVICE DISPOSABLES - PAPER, GLOVES, AND NAPKINS



## HOFFMASTER TISSUE/POLY BRIGHT WHITE PAPER ROLL TABLECOVER

- 40 in. x 300 ft.



SWP ITEM #	MFG ITEM #	DESCRIPTION
753.1002	260045	1 ROLL/CTN

## TIDI PRODUCTS WHITE PLASTIC APRON

- 28 in. x 46 in.



SWP ITEM #	MFG ITEM #	DESCRIPTION
846.1003	10419	100BOX/CTN 5/BOX

## KEYSTONE BOUFFANT CAP WHITE

- 21 in.
- Medium
- White



SWP ITEM #	MFG ITEM #	DESCRIPTION
845.1015	110NW	1000/CTN

## KIMBERLY CLARK KLEENGUARD APRON 24 IN. X 44 IN.

- Strong liquid and particulate barrier
- Low in lint
- 24 in. x 44 in.



SWP ITEM #	MFG ITEM #	DESCRIPTION
846.1005	44481	100/CTN



## INTEPLAST GROUP FOODSERVICE POLY GLOVES

- Wrist length poly gloves



SWP ITEM #	MFG ITEM #	DESCRIPTION
850.1021	70850 - MEDIUM	1000/BOX 10BOX/CTN
850.1026	70850 - LARGE	1000/BOX 10BOX/CTN

## HUHTAMAKI CUP CARRIER - 4 HOLE CHINET FLIGHT

- 8.5 in. x 8.5 in.
- Holds 4 cups



SWP ITEM #	MFG ITEM #	DESCRIPTION
670.4023	15300221	300/CTN

## POLY-KING PRODUCTS Poly-King Products ROUND TOOTHPICKS

- 800 toothpicks/case
- 24 cases/ctn = total of 19200/ctn



SWP ITEM #	MFG ITEM #	DESCRIPTION
802.1008	35111039	19200/CTN

## KIMBERLY CLARK WHITE DINNER NAPKINS 1-PLY

- 17 in. x 17 in. 1/4 fold napkin



SWP ITEM #	MFG ITEM #	DESCRIPTION
702.1003	98171	4000/CTN



# NAPKINS - FOOD SERVICE DISPOSABLES



- Economical and small
- Ideal for limited menu service operations
- 1-ply napkins
- 13 in. x 12 in.



SWP ITEM #	MFG ITEM #	DESCRIPTION
701.1090	2629	6000/CTN



**SCA**  
**TORK XPRESSNAP**  
**WHITE NAPKIN**

- Designed for high-traffic environments
- 17 in. x 7.5 in. - unfolded size
- 5.6 in x 7.5 in. - folded size



SWP ITEM #	MFG ITEM #	DESCRIPTION
717.1025	DR7050A	500/ROLL - 6000/CTN



- Economical MorNap, full-fold dispenser napkins are a low cost large dispenser napkins for all quick-service restaurants
- 12 in. x 17 in.



SWP ITEM #	MFG ITEM #	DESCRIPTION
701.1021	374.02	6000/CTN



- 11.5 in. x 12.5 in. napkin



SWP ITEM #	MFG ITEM #	DESCRIPTION
702.1012	2059	6000/CTN



**KIMBERLY CLARK**  
**NAPKIN MEGA CARTRIDGE**  
**WHITE**

- 1-ply
- 6.5 in. x 8.4 in.



SWP ITEM #	MFG ITEM #	DESCRIPTION
702.1010	98908	5250/CTN



- 9.5 in. x 9.5 in. napkin



SWP ITEM #	MFG ITEM #	DESCRIPTION
701.1087	2222A1	4000/CTN



**SCA**  
**TORK XPRESSNAP**  
**WHITE NAPKIN**

- Made from 100% recycled fiber and a Bleach-free process and 90% post-consumer content
- 8.5 in. x 13 in.



SWP ITEM #	MFG ITEM #	DESCRIPTION
717.1024	DX900	6000/CTN



- Automatic one-piece
- Tuck top
- Coated white box
- Packed in corrugated boxes
- White, 5 lb.



SWP ITEM #	MFG ITEM #	DESCRIPTION
681.1013	18407635	10" X 5" X 5-3/8" - 200/CTN

# FOOD SERVICE DISPOSABLES - TRAYS

**SEALED AIR**  
**Sealed Air DRI LOCK**  
Our Products Protect Your Products®  
**MEAT PAD - AC50**

- Absorbent pads feature highly absorbent virgin fluff pulp that is completely enclosed in a sealed polyethylene pouch



SWP ITEM #	MFG ITEM #	DESCRIPTION
679.1005	18000124	4.75" X 7" - 2000/CTN

**PACTIV**  
**PACTIV**  
**FOAM MEAT TRAYS**

- Meat trays
- White



SWP ITEM #	MFG ITEM #	DESCRIPTION
677.2001	16209001	1S - 5.25 X 5.25 X .5 - 1000/CTN
677.2013	16200681	2S - 8.25 X 5.75 X .5 - 500/CTN

- Meat trays
- Yellow



677.3013	59660094	Y2P - 8 X 5.75 X 1.2 - 500/CTN
----------	----------	--------------------------------